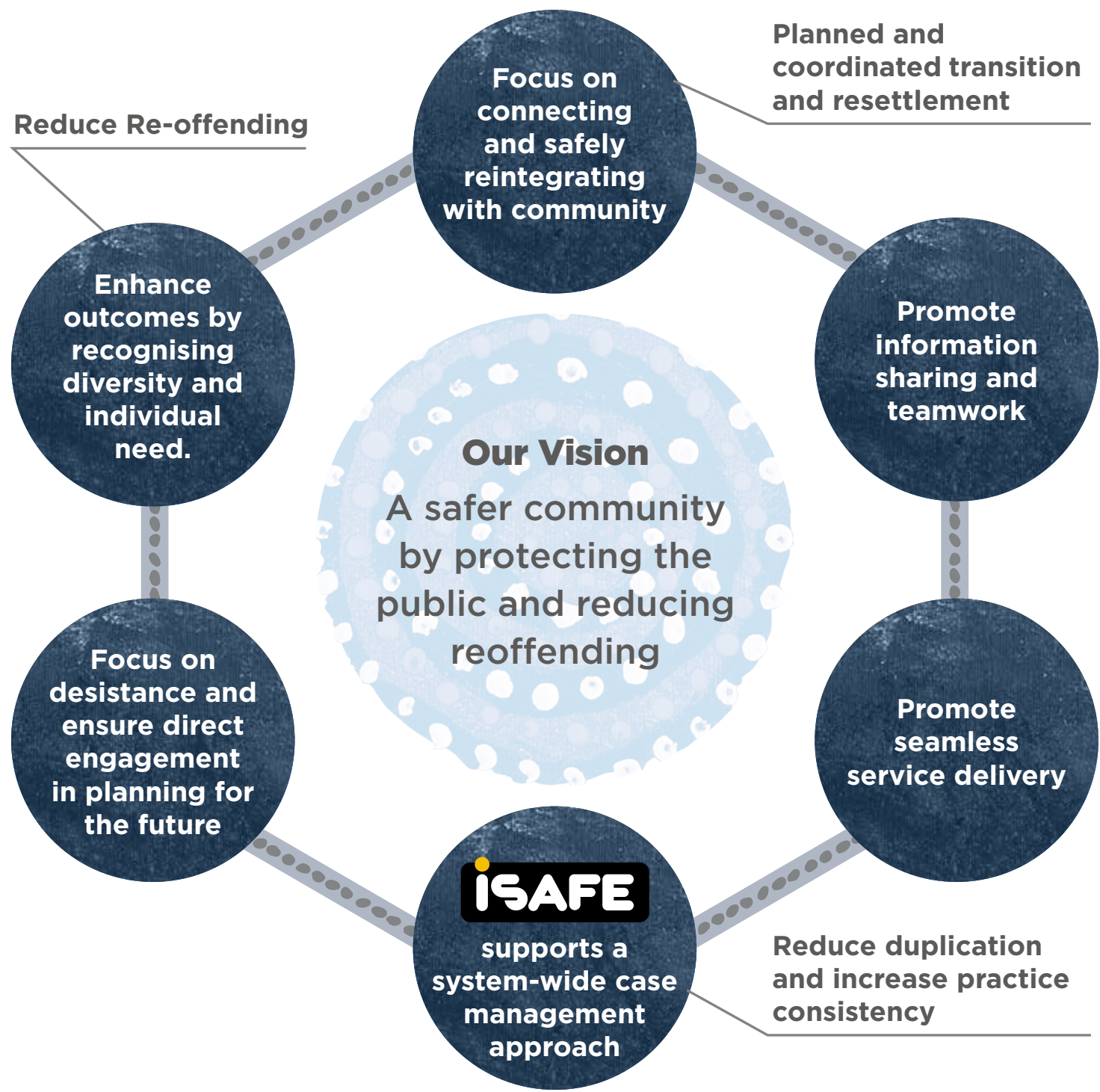




Our Approach

End-To-End Case Management (E2E CM) is delivered as a system-wide, seamless, person-centric, goal and outcome focused approach, enabled by iSAFE.



Guiding Principles ►

- | | | |
|--------------------|----------------------------------|--|
| • Community Safety | • Holistic | • Gender and Culture Matter |
| • Rehabilitation | • Person-centric | • Community Focused |
| • Continuity | • Strengths Based and Responsive | • Relationship Based, <i>Every Contact Matters</i> |